

PATENT
PENDING

"...THE #1 RESAW"

"I was just overwhelmed with what I saw. The workmanship, the material, it was just way more than what I thought I would be purchasing. They're super, super people to work with and I think they've got *the #1 resaw*."

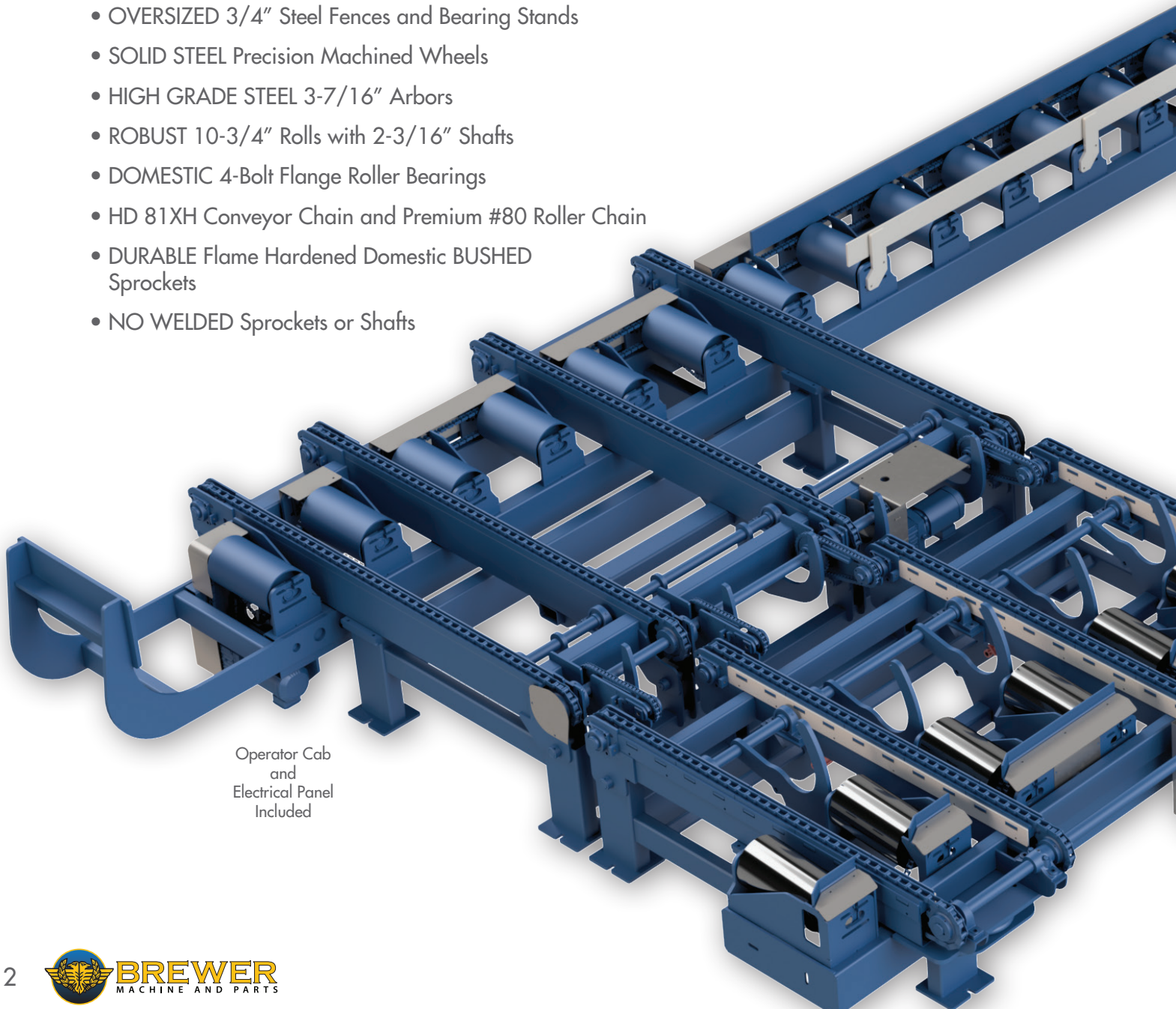
Donnie McCraw
McCraw Lumber Company
Cadiz, Kentucky

BENEFIT SUMMARY

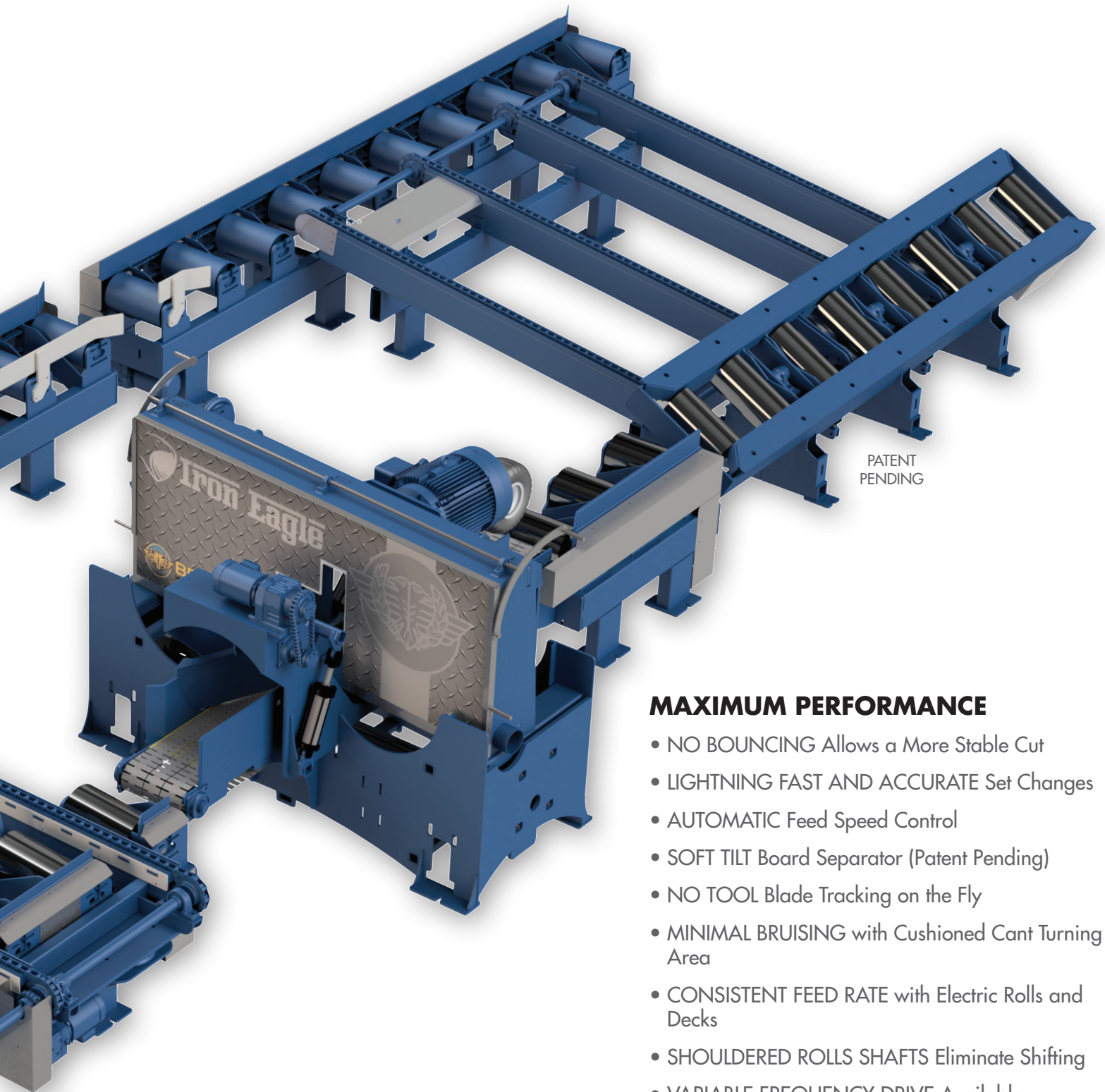
Brewer's Iron Eagle is designed to fill today's need for a heavy long-lasting grade runaround system while allowing for the use of inexpensive thin kerf band saw technology. Since the massive 46,000 pounds is nearly twice as much as the competition, we provide an unbeatable benefit of handling the daily wear and tear from operating larger cants. No more repurchasing a new machine every four or five years.

MASSIVE 23 TON TOTAL WEIGHT

- ROCK-SOLID 6-1/2 Ton Saw Head
- HEAVY DUTY 4" x 10" Steel Frame
- OVERSIZED 3/4" Steel Fences and Bearing Stands
- SOLID STEEL Precision Machined Wheels
- HIGH GRADE STEEL 3-7/16" Arbors
- ROBUST 10-3/4" Rolls with 2-3/16" Shafts
- DOMESTIC 4-Bolt Flange Roller Bearings
- HD 81XH Conveyor Chain and Premium #80 Roller Chain
- DURABLE Flame Hardened Domestic BUSHED Sprockets
- NO WELDED Sprockets or Shafts



Operator Cab
and
Electrical Panel
Included



PATENT
PENDING

MAXIMUM PERFORMANCE

- NO BOUNCING Allows a More Stable Cut
- LIGHTNING FAST AND ACCURATE Set Changes
- AUTOMATIC Feed Speed Control
- SOFT TILT Board Separator (Patent Pending)
- NO TOOL Blade Tracking on the Fly
- MINIMAL BRUISING with Cushioned Cant Turning Area
- CONSISTENT FEED RATE with Electric Rolls and Decks
- SHOULDERED ROLLS SHAFTS Eliminate Shifting
- VARIABLE FREQUENCY DRIVE Available on Saw Motor

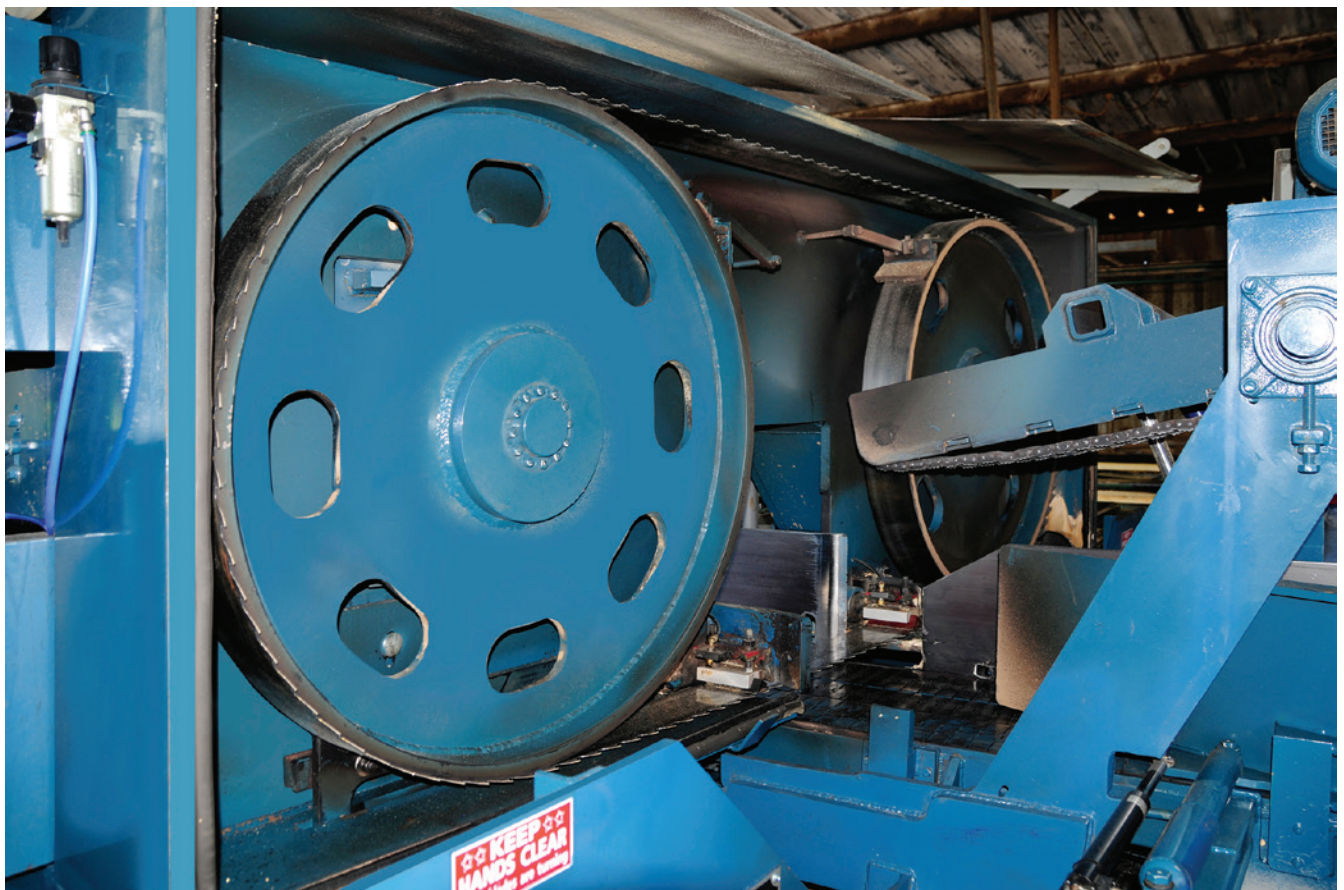
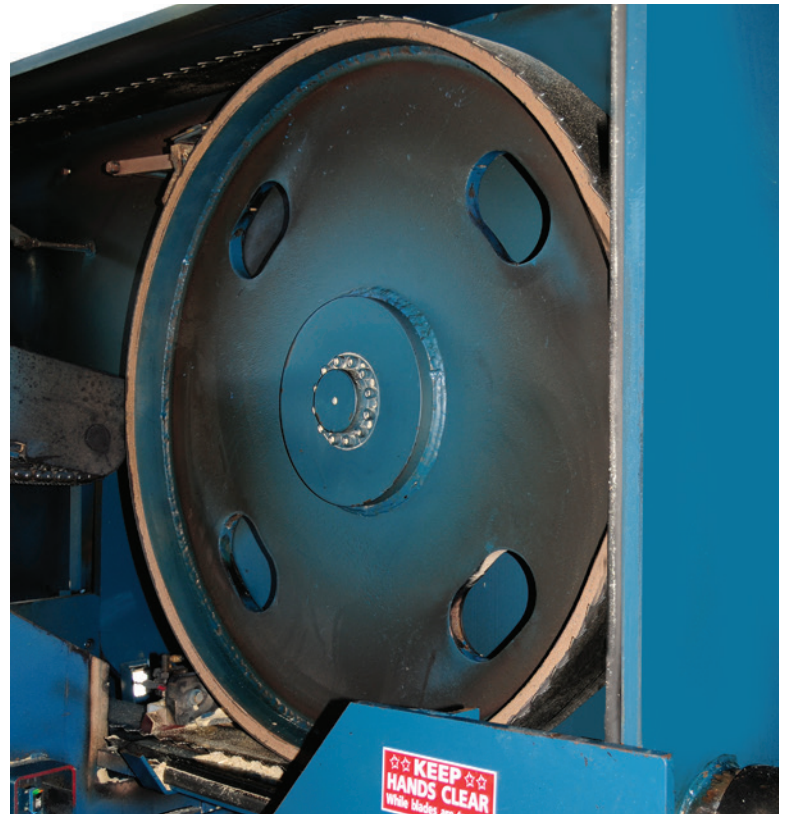
HEAD



The Iron Eagle's core is its massive saw head, weighing in at over 6 tons. This bulky strategy helps absorb the energy of large cants, minimizes the bounce and vibrations associated with lighter saws, decreases maintenance cost and downtime while increasing overall system lifespan. The rock solid saw platform also translates into increased blade performance and improved cut quality.

WHEELS

Complementing this strong base are meticulously accurate 40" solid steel precision machined wheels. You can easily see that the Iron Eagle's performance is unparalleled in the market.



ARBORS



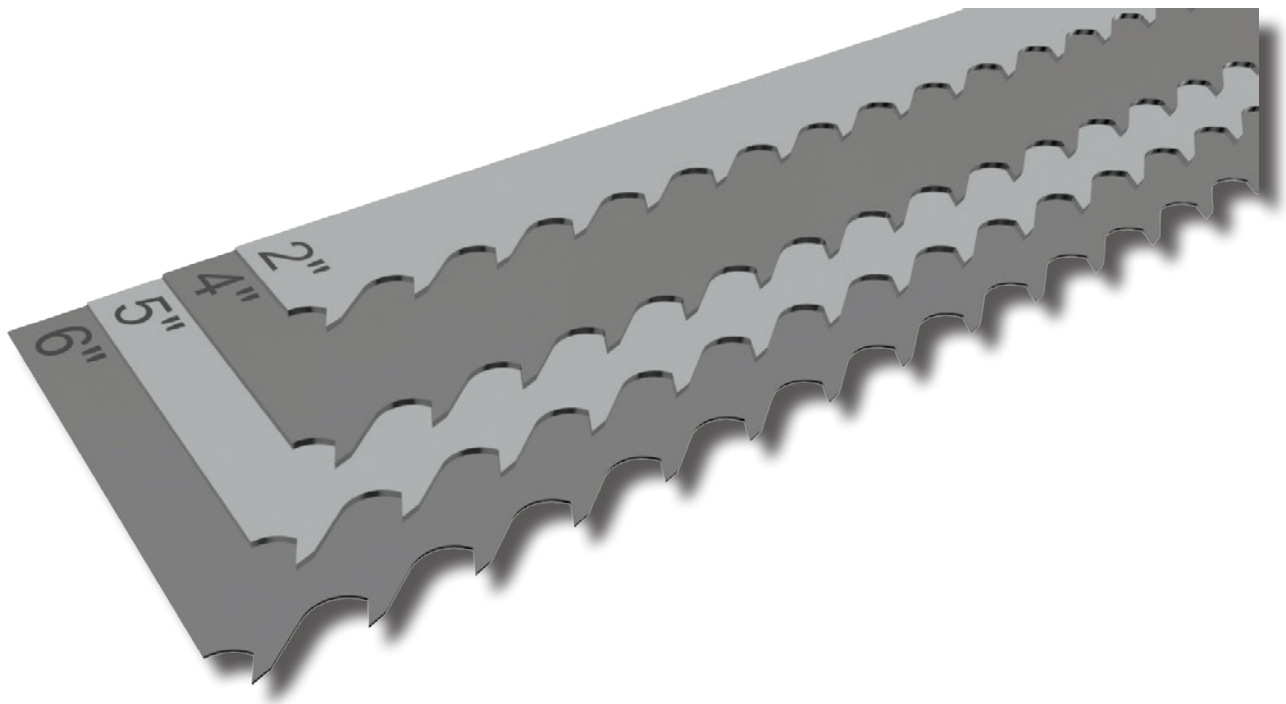
Iron Eagle's oversized 3-7/16" high grade steel arbors minimize maintenance requirements and eliminate the catastrophic effect of a broken saw wheel arbor.



BAND WIDTHS

YOUR CHOICE—2", 4", 5" OR 6" BAND

Some manufacturers only provide one option, but Brewer lets you pick. Thin Kerf Band technology has progressed in recent years to allow feed speeds on all size of bands that were impossible just a few years ago. A 2" band is still the widest blade available that doesn't require a filing room. If this is best for your business model, Brewer's 2" model will ensure you get the most out of your narrow band.

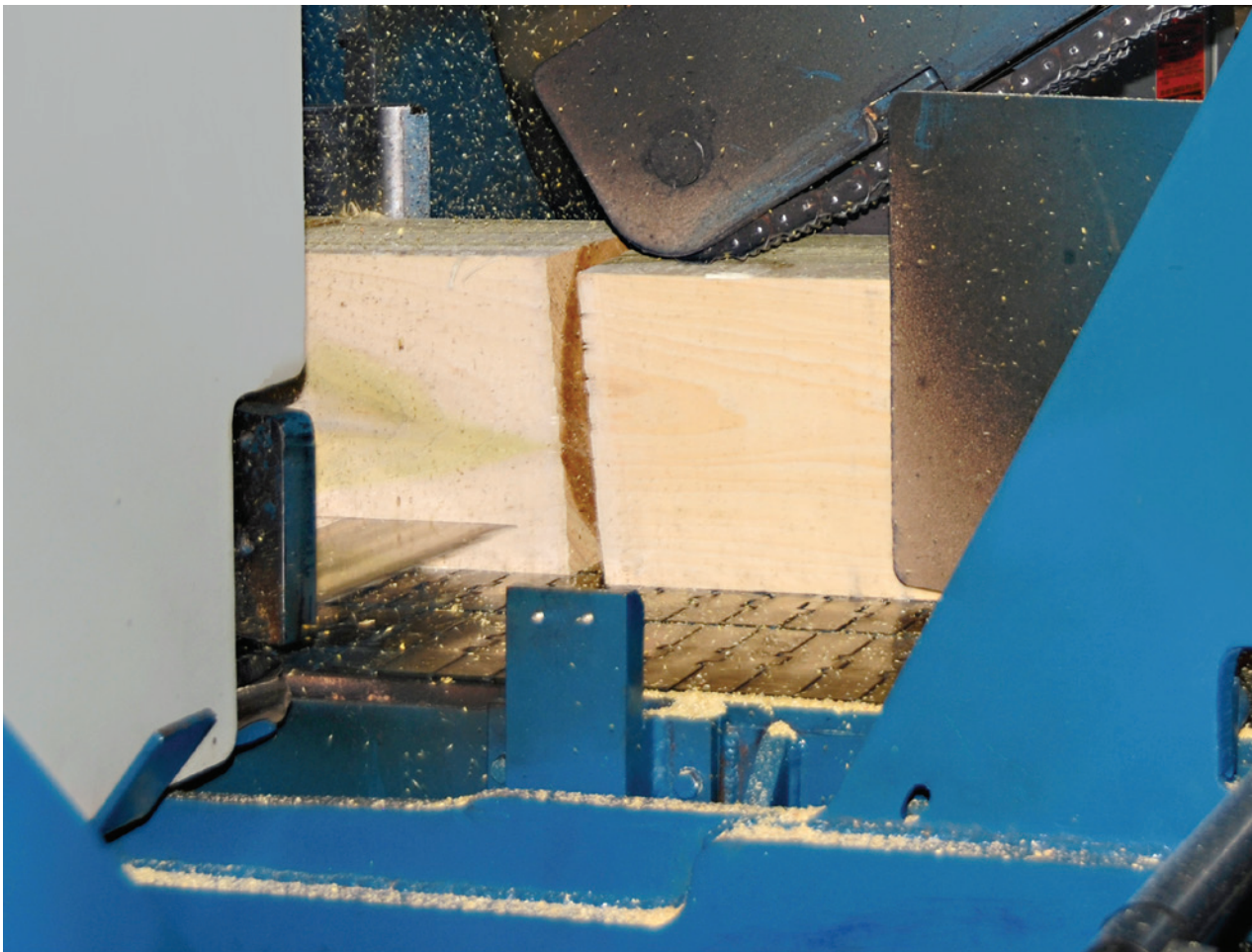


However, if you want higher production each shift, a 4", 5" or 6" band is the answer. Some will tell you that these wide bands require an expensive internal filing room; however, these can be a thing of the past! Outsource options are available for maintaining bands without the cost and headache of an internal filing room. Shipping services are also available so you can find expert filers even if you are located in the backwoods.

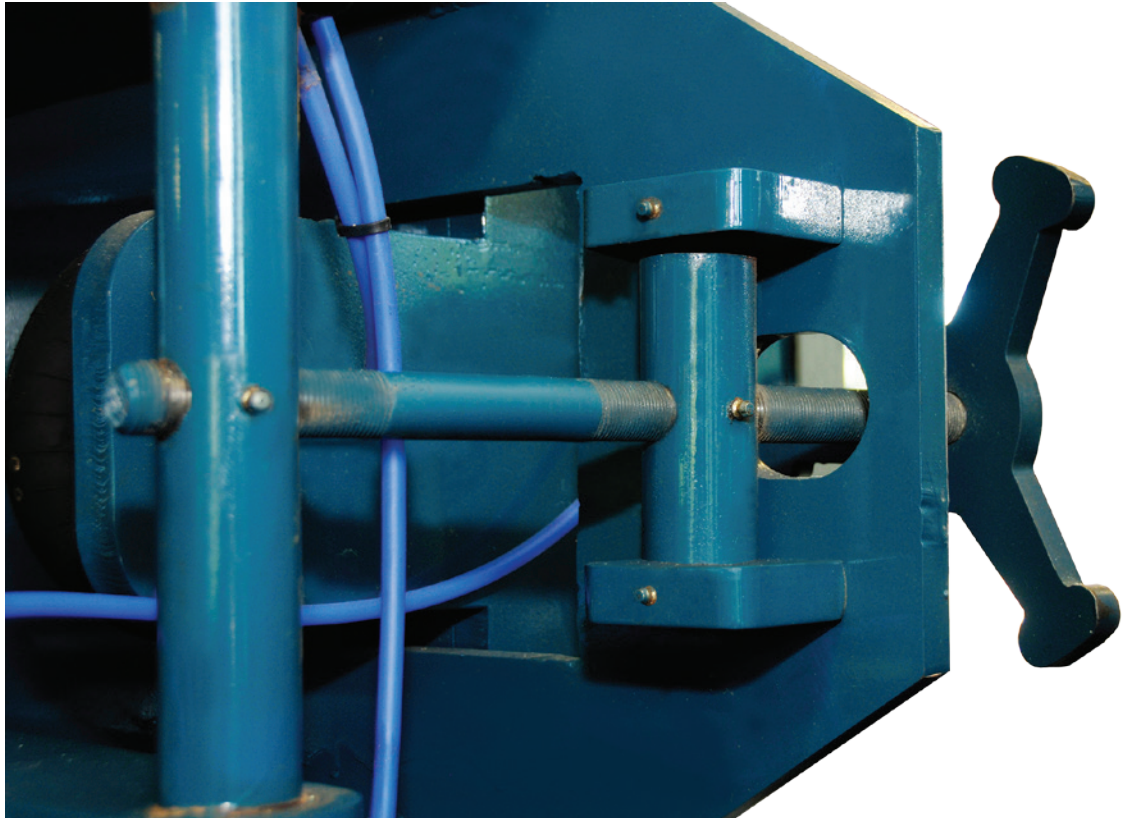
SETWORKS



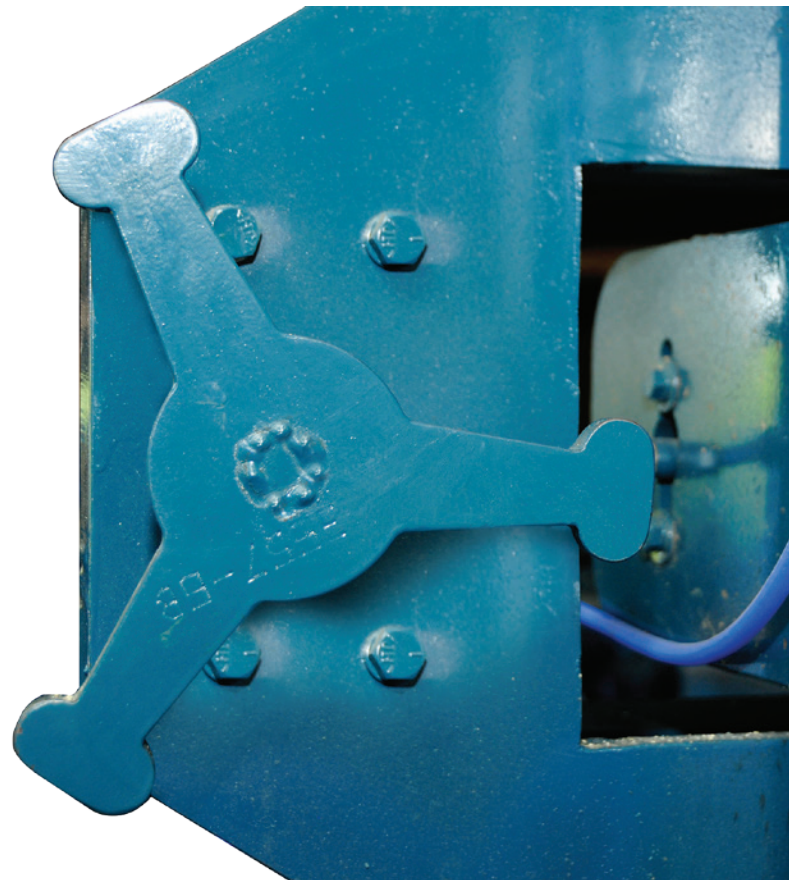
Set changes are lightning fast and dead-on accurate. Delta Computer Systems, Inc. brings their 30 years of experience and reputation as a worldwide leader in hydraulic, pneumatic and electric closed loop controls to provide a superior set works system for the Iron Eagle. Fast, accurate set changes mean more time cutting and less time waiting for greater sales and profits.



BAND TRACKING



The NO TOOL band tracking on the Iron Eagle saw is an invaluable feature not found on competing runarounds. Band tracking control is built into the saw so no unnecessary trips to the toolbox are required. Quick and easy tracking provides more adjustments for increased band life and less mis-cuts.



CHAIN DECKS

The super strong construction of the Iron Eagle transfer decks and roll cases are engineered to eliminate the stress cracks and breaks prevalent in lighter built systems. Chain failure is a thing of the past with our heavy duty 81XH conveyor chain and premium #80 roller chain. Infeed cross-over chain overlap eliminates deck transition jams caused by smaller cants. More consistent even-ending at infeed cross-over deck helps keep the system butt-fed.



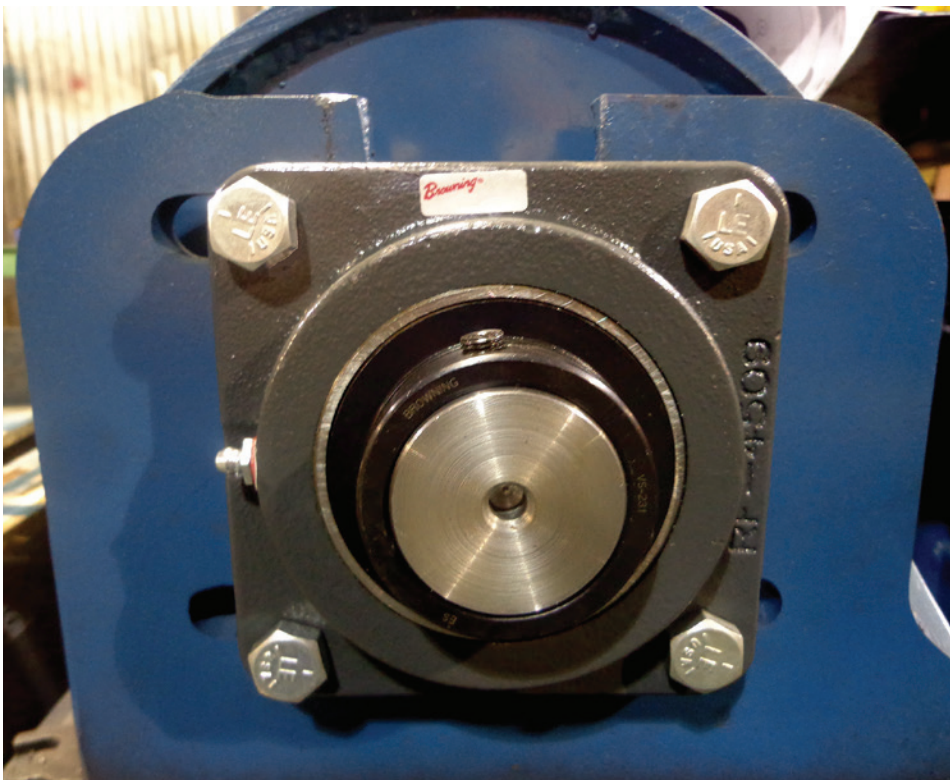
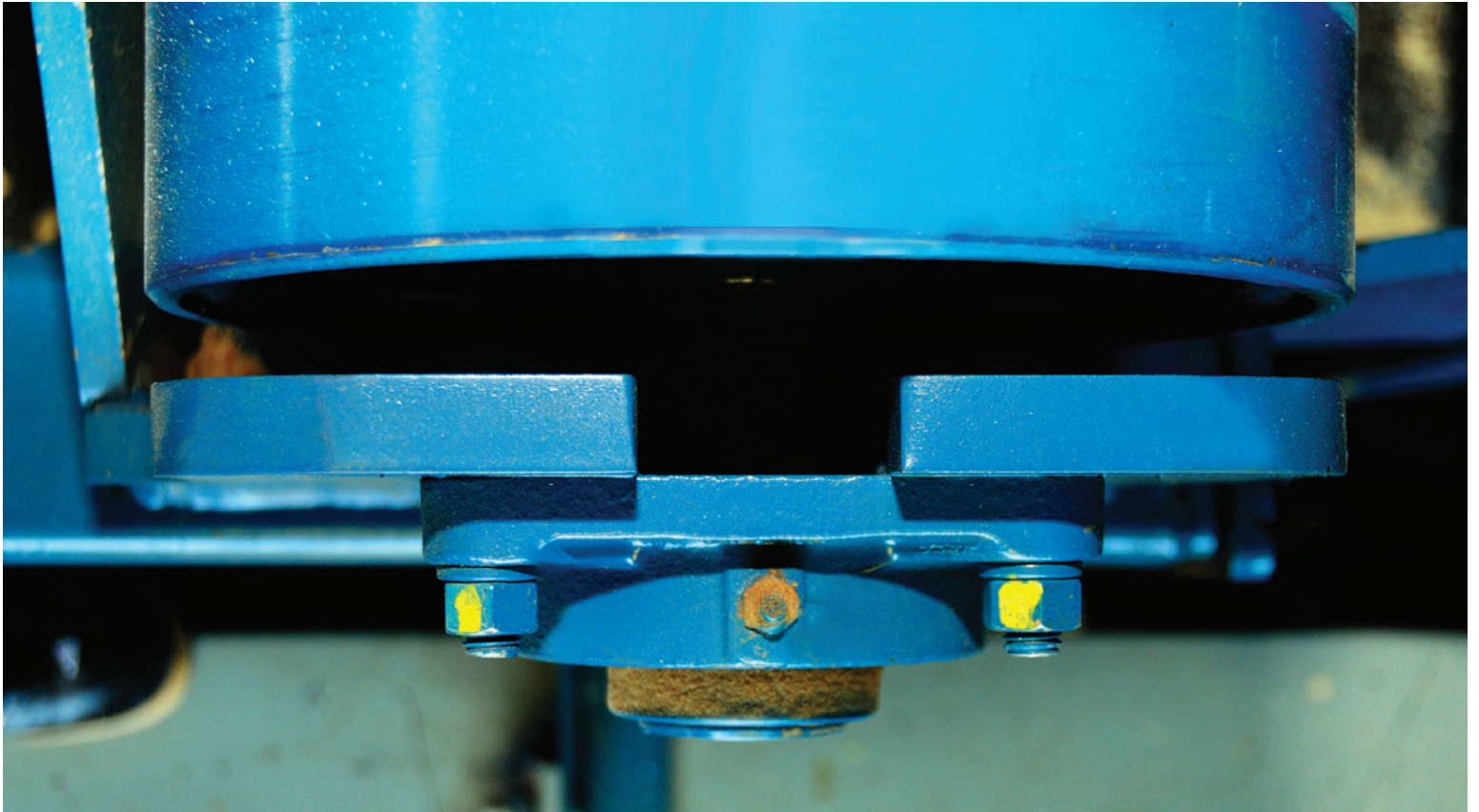
ROLL CASES



The heavy duty 4"x10" tubing frame structure, 10-3/4" diameter rolls with 3/8" wall thickness and 2-3/16" high strength shafts virtually eliminates bending, flexing and premature failure. The roller shafts are also manufactured with a machined shoulder that eliminates roll shifting thus assuring drive chain alignment. The standard electric drives provide consistent feed rates even on the coldest days. No more waiting for hydraulic fluid to heat up.



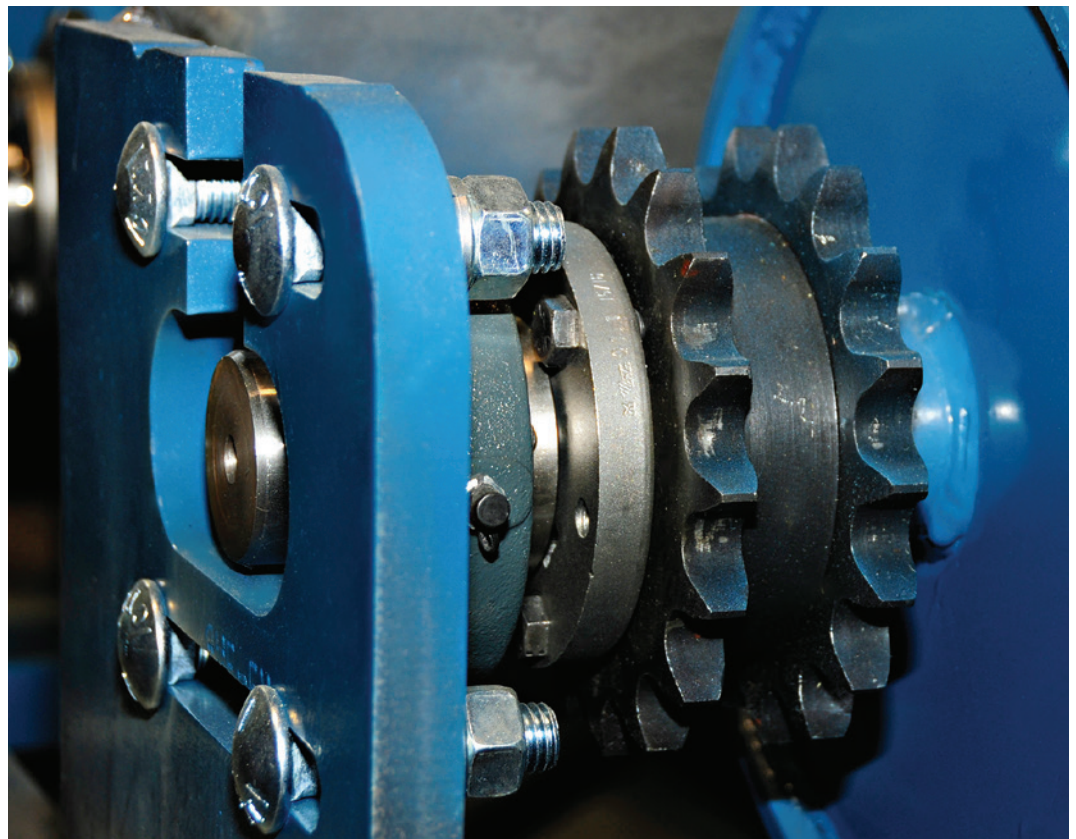
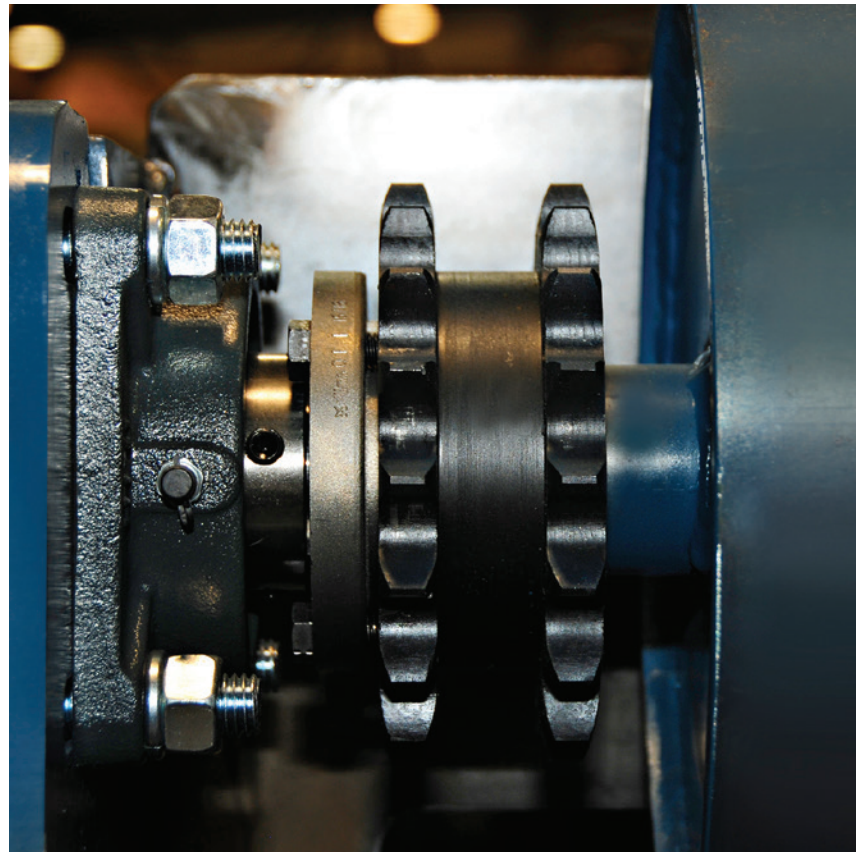
BEARINGS



4-Bolt Flange style bearings are used throughout ensuring they stay where they belong and aren't subject to moving and slipping under the weight of large, heavy cants. The 3/4" thick steel bearing stands are also designed to counter the effects of constant abuse that large cants can dish out.

SPROCKETS

Domestic heat treated sprockets will ensure long life of the drive system. Keyed and bushed taper lock style hubs on each sprocket will keep everything aligned and allow for easier and quicker maintenance. THERE ARE NO WELDED SPROCKETS TO SHAFTS.



CONTROLS



The automatic feed speed controls on the Iron Eagle saw and infeed roll case keep the system cutting at the optimum feed rate. Speeds are controlled by a mechanical feedback transducer. Lasers and ultra-sonic sensors are affected by wood color, density and other aspects of cants that can lead to inconsistent feedback increasing risk of band failure from large cants feeding too fast. Mechanical feedback eliminates this threat.



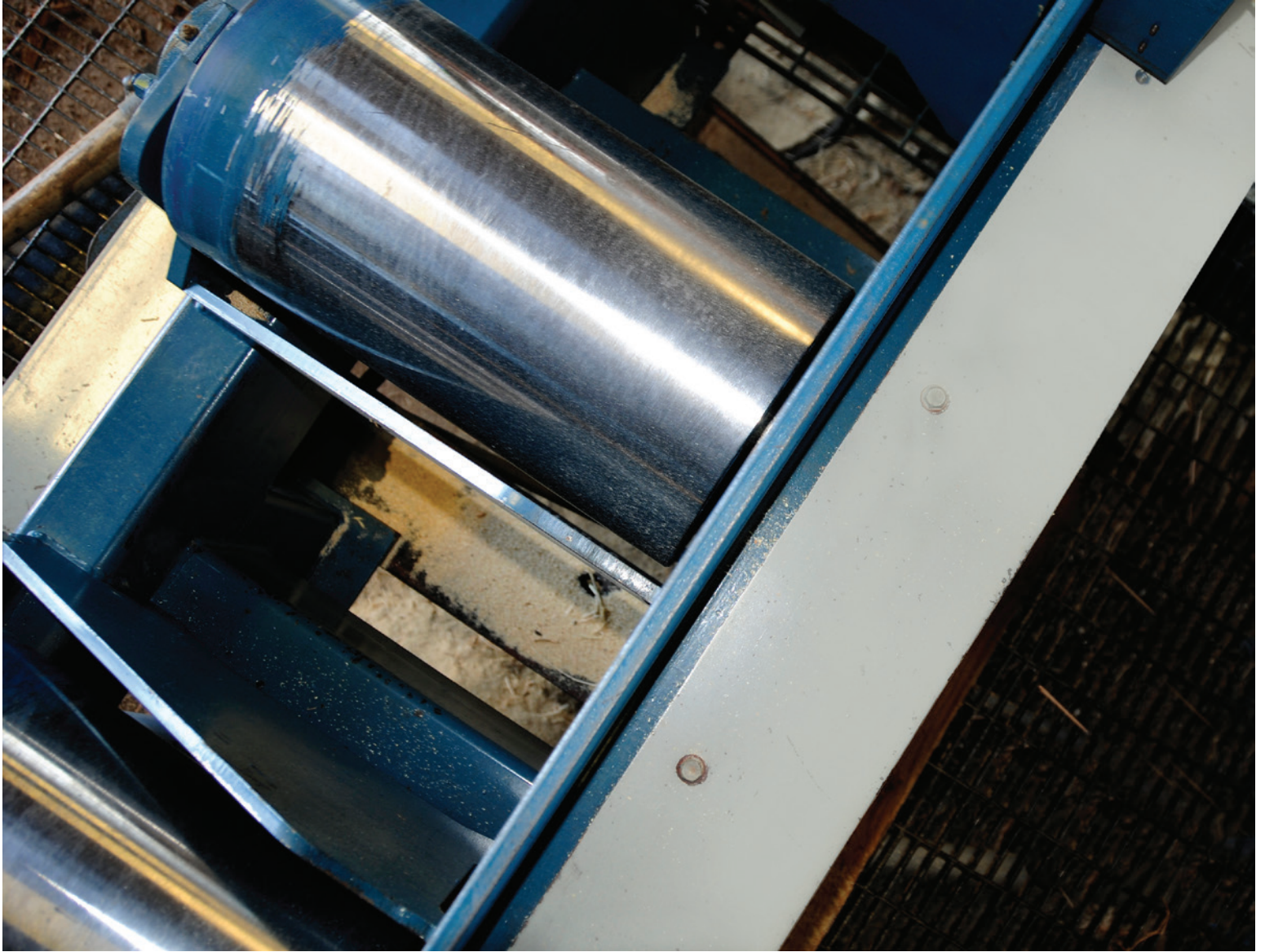
BOARD SEPARATOR

PATENT PENDING

Iron Eagle's Soft Tilt Board Separator (*PATENT PENDING*) addresses the inherent problem with a tilting roll case. Greasable heim joint style cylinder rod ends eliminate the non-stop replacement necessary in lighter systems. We also have a specially designed hydraulic circuit that eliminates the sudden stop when returning to center that puts undue stress on the system. Taken together this lessens machine wear, maintenance cost, downtime and extends the life of the system.



FENCES



Iron Eagle's oversized $\frac{3}{4}$ " thick steel fences withstand the constant abuse of the larger 18"x18"x18' hardwood cants. Lighter fences may work for a while, but they will bend or break eventually requiring expensive repairs.

TURNING FOR GRADE

The Iron Eagle cant turners are strong enough to easily turn large cants and fast enough to turn small ones. Because they turn the cant off-line, there is no delay in feeding cants into the saw. This allows for continuous butt feeding assuring optimum throughput. The re-placeable cushioned turning area minimizes bruising and reduces the shock and wear on the chain and chain bed. Minimal damage means maximum wood quality and equipment lifespan.



ELECTRICAL



Electronic control panels are professionally built with more standard features than competitor systems. The Iron Eagle's electrical panel includes a main dis-connect, soft starters with overload protection, a PLC with touch screen control panel and emergency stop buttons. All at no extra charge! No need to have a maintenance technician that's a computer whiz. Re-remote access can be built into the system to allow our electrical experts to log into the PLC program and make adjustments or troubleshoot any problems that arise.



OPERATOR CAB



The system also includes a 4' x 5' deluxe operators cab. This cab comes standard with a deluxe seat with arm supports, climate control and operator control stands to maximize both comfort and efficiency.





BREWER

MACHINE AND PARTS

SAWS

Band Saws
Block Saws
Cutoff Saws
Gang Saws
Halving Saws
Merchandising Saws
Quartering Saws
Scragg Saws
Trim Saws

MATERIAL HANDLING

Belt Conveyors
Chain Decks
Lifts
Platforms
Roll Cases
Stackers
Turn Tables
Unscramblers

CONDITIONING EQUIPMENT

Board Conditioners
Board Edgers
Chamfers
Debarkers
Dedusters
Heart Edgers
Notchers
Sap Edgers
Slab Edgers
Tie Platers
Tie Presses
Tie Press and Platers
Two-Pocket Slab Edgers

OTHER EQUIPMENT

Cat Walk
Electric Systems
Hydraulic Systems
Operator Cabs

BREWER MACHINE AND PARTS, LLC

P.O. BOX 512

504 FRONT STREET

CENTRAL CITY, KY 42330

(800) 345-6516

WWW.BREWERMACH.COM

FULL PRODUCT LINES FOR PALLET, STAVE, GRADE AND RAIL TIE INDUSTRIES.